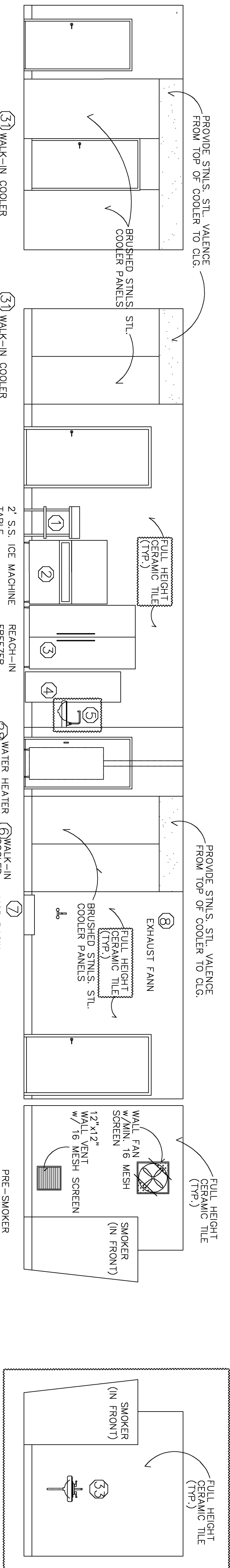


Demeris Barbecue

1702 West Loop North
Houston, Texas 77092

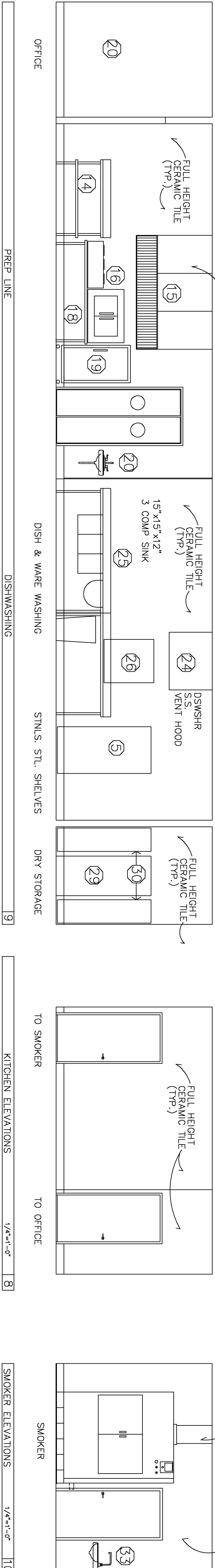


WALK-IN COOLER 13

PREP AREA

SMOKER ELEVATIONS 11

SMOKER ELEVATIONS 10

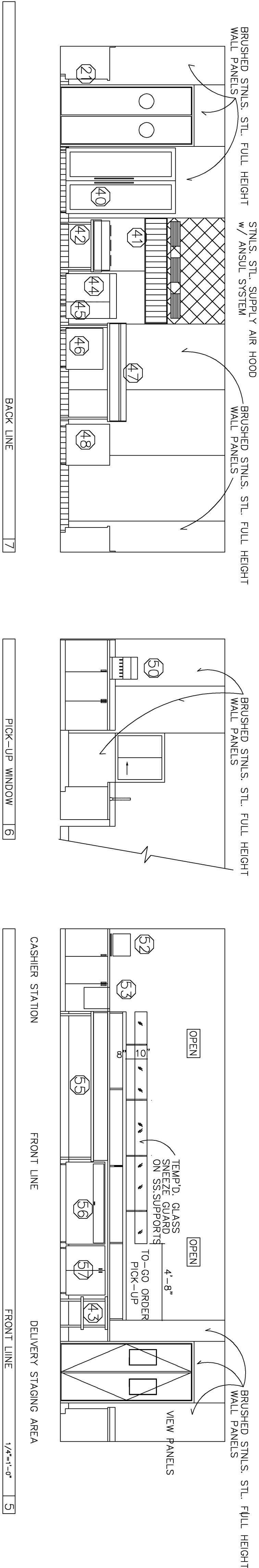


PREP LINE

DISHWASHING

KITCHEN ELEVATIONS 8

SMOKER ELEVATIONS 10



BACK LINE 7

PICK-UP WINDOW 6

CASHER STATION

FRONT LINE 5

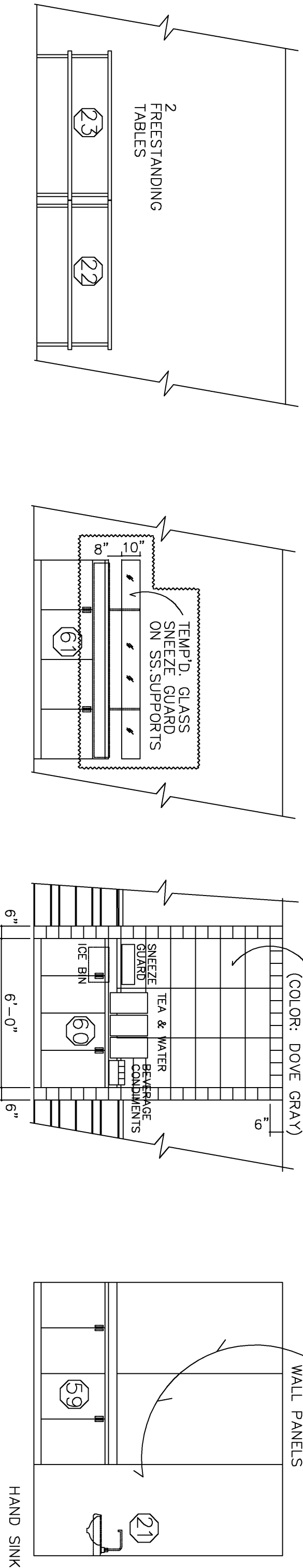
FRONT LINE 5

MID-KITCHEN PREP TABLES 4

CONDIMENT ISLAND 3

DRINKS/CONDIMENTS 2

ORDER STAGING 1



EQUIPMENT SCHEDULE - KITCHEN				
EQUIPMENT NAME	SIZE	POWER	WATER / DRAIN	NOTES
1 SS TABLE	2'x2'x36"	220V	YES / YES	6" BACK SPLASH, HAS 1 LOWER SHELF
2 REACH-IN FREEZER	4'x2'x6'6"	220V	YES / YES	SS FINISH
3 REACH IN FREEZER	4'x2'-6"x6"	220V	YES / YES	SS FINISH, ON ROLLERS
4 SS SHELVING RACK	4'x1'		YES / YES	STNLS. STEEL ACCESS. PACK. MKCS. VALVE
5 HAND SINK	11'-0"x1'-6"		YES / YES	ALUM. FINISH. PRE-FAB
6 WALK-IN COOLER	2'-6"x2'-6"x8"	220V	YES / YES	PRE-CAST CONC. UNIT W/ FAUCET
7 HOT BASIN	2'-6"x2'-6"x8"		NONE / YES	NO BACK SPLASH, HAS 1 LOWER SHELF
8 SS TABLE	6'x2'x3'		YES / YES	6" BACK SPLASH, HAS 1 LOWER SHELF
9 SS TABLE	6'x2'x3'		YES / YES	6" BACK SPLASH, HAS 1 LOWER SHELF
10 SS TABLE	6'x2'x3'		YES / YES	6" BACK SPLASH, HAS 1 LOWER SHELF
11 SMOKER				
12 DESK				
13 CHAIR	5'x3'x3'			
14 EXHAUST HOOD	7'-4x4'	220V		6" BACK SPLASH, HAS 1 LOWER SHELF
15 EXHAUST HOOD	7'-4x4'	220V		ANSEL SYSTEM & MAKE-UP AIR
16 B BURNER STOVE	3'x2'-8"	GAS		NO BACKSPLASH
17 SS TABLE	6'-8"x3'-6"			NO BACKSPLASH
18 CONVECTION OVEN	3'-6"x3'-6"	GAS/110V		FREE STANDING
19 HOT HOLDER	2'-6"x2'-6"	110V	YES / YES	SS FINISH, ON ROLLERS
20 HOT HOLDER	2'-6"x2'-6"	110V	YES / YES	SS FINISH, ON ROLLERS
21 HAND SINK	11'-0"x1'-8"		YES / YES	STNLS. STEEL ACCESS. PACK. MKCS. VALVE
22 SS TABLE	6'x3'x3'			NO BACK SPLASH, HAS 1 LOWER SHELF
23 SS TABLE	6'x3'x3'			NO BACK SPLASH, HAS 1 LOWER SHELF
24 NOT USED				
25 D CONVE. RINSE SINK	15'x15'x12"		YES / YES	6" BACK SPLASH, BOLT FLANGE ON END
26 D CONVE. RINSE SINK	15'x15'x12"		YES / YES	6" BACK SPLASH, BOLT FLANGE ON END
27 SS TABLE	6'-8'x3'x3'	220V	YES / YES	6" BACK SPLASH, BOLT FLANGE ON END
28 WATER HEATER	2' DIA.	GAS		6" BACK SPLASH
29 SS SHELVING RACK	10'x1'-6"			SS FINISH
30 SS SHELVING RACK	10'x1'-6"			SS FINISH
31 WALK-IN COOLER	11'-6"	220V	NONE / YES	ALUM. FINISH. PRE-FAB
32 WALK-IN COOLER	11'-6"	220V	YES / YES	ALUM. FINISH. PRE-FAB
33 HAND SINK	11'-0"x1'-8"		YES / YES	STNLS. STEEL ACCESS. PACK. MKCS. VALVE

EQUIPMENT SCHEDULE - LINE				
EQUIPMENT NAME	SIZE	POWER	WATER / DRAIN	NOTES
40 REACH-IN FRIG	4'x2'-6"	220V		SS FINISH - GLASS DOORS
41 EXHAUST HOOD	6'-5'x4'-1"	220V		ANSEL SYSTEM & MAKE-UP AIR
42 SS TABLE	3'x2'-8"	GAS		6" BACK SPLASH, 1 LOWER SHELF
43 SS TABLE	11'-0"x3'-6"	GAS		SS FINISH
44 SS TABLE	11'-0"x3'-6"	GAS		SS FINISH
45 SMALL FRIG	11'-2'x3'-6"	GAS		SS FINISH
46 PORT-A-WARMER	11'-6"x3'	110V		SS FINISH
47 SS TABLE	6'x3'x3'	110V		6" SPLASH W/UPPER & LOWER SHELF
48 STEAMER	2'-6"x1'-10"	110V		SS FINISH
49 STEAMER	2'-6"x1'-10"	110V		SS FINISH
50 SODA HEAD	12'-6"-0" SS	110V		100 OHM VENT TO ROOF
51 ORDER CABINET	5'-6"x1'-6"	110V	YES / YES	4" SPLASH, 2 LOWER DRS & SHELVES
52 CASHIER CABINET	4'-10'x2'-10"	110V		COUNTERTOP
53 TEA GLASS SERVER	PER MANUF.			RECESSED INTO COUNTERTOP
54 SS TRAY RACK	PER MANUF.	110V		FREESTANDING
55 SS TRAY RACK	PER MANUF.	110V		SS FINISH
56 SALAD COOLER	5'x2'-6"	110V		SS FINISH
57 UNDERFR FRIG	3'x2'-6"	110V		SS FINISH
58 TRAY RAIL	15'x1'-2"			STNLS. STEEL TUBING & MANTO BRACKETS
59 DELIVERY STAGE CAB	11'x2'x3'		YES / YES	4" SPLASH, 2 LOWER SHELF, 6 DRS
60 DRINK/CONDIMENT	6'x1'-10"	110V	YES / YES	4" SPLASH, 2 LOWER SHELF, 6 DRS
61 CONDIMENT ISLAND	6'x3'-5'	110V	YES / YES	2 LOWER SHELF, 4 DRS EA SIDE

THESE DRAWINGS ARE INSTRUMENTS OF SERVICE AND ARE THE PROPERTY OF A. ROBERT HOOVER ARCHITECTS. NO PART OF THESE DRAWINGS ARE TO BE REPRODUCED OR USED IN ANY MANNER WITHOUT THE WRITTEN CONSENT OF A. ROBERT HOOVER ARCHITECTS. © 2011 COPYRIGHT BY ROBERT HOOVER, AIA. ALL RIGHTS RESERVED.